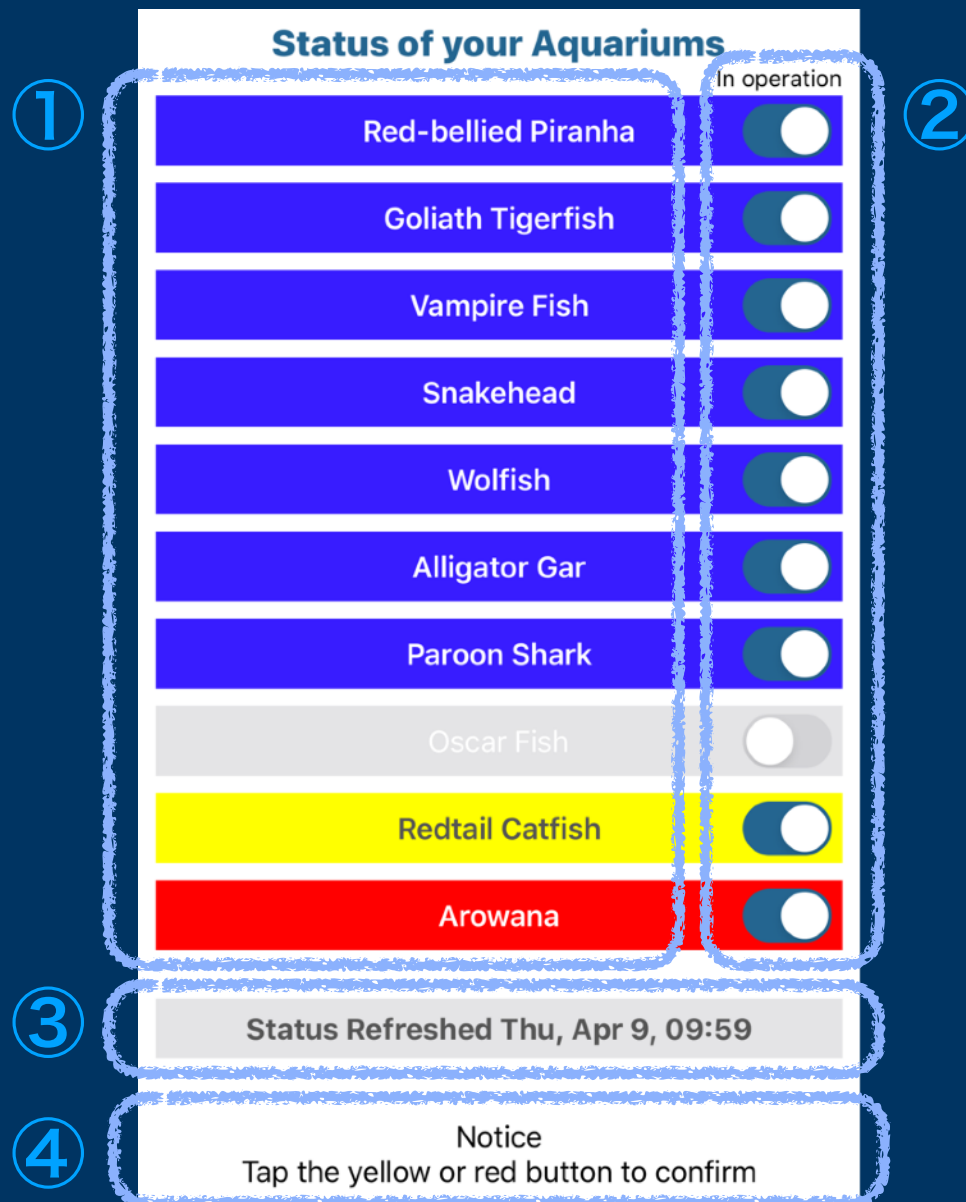
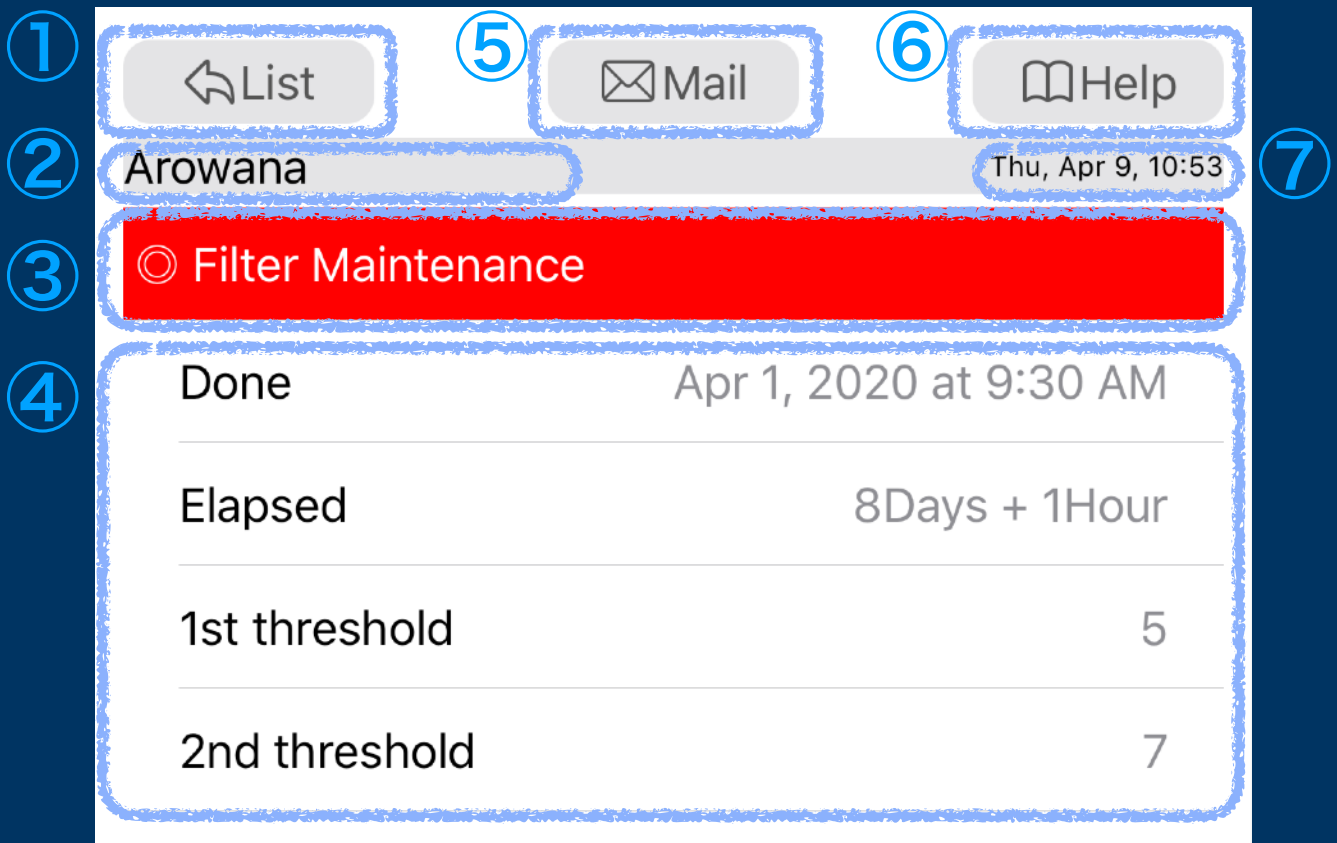


Status of your Aquariums Page



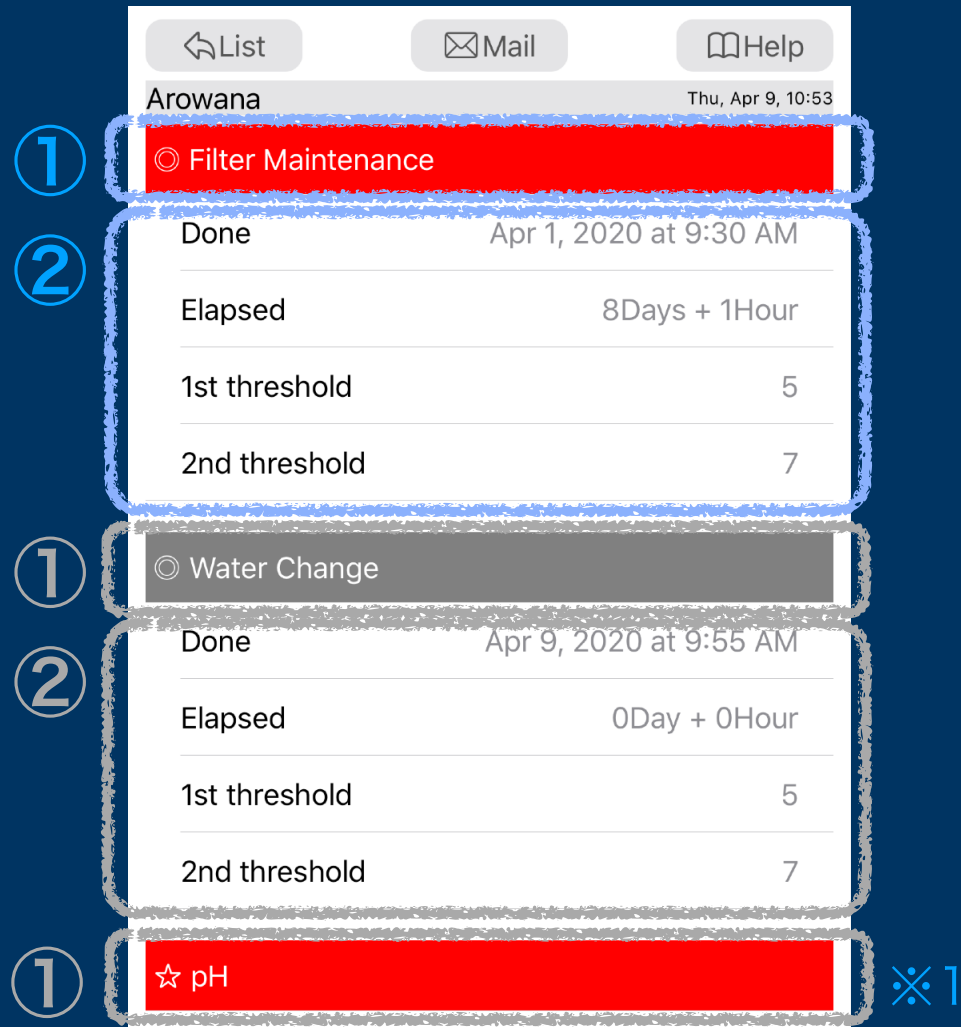
item	function	explanation
①	name/status indicate button	<ul style="list-style-type: none"> Display the name and operation status in color blue : OK、 yellow : Light alarm、 red : Heavy alarm、 gray : Out of service Tap to go to details page name can be set up to 20 characters on settings page
②	operation status button	Show / hide aquarium operation status
③	Display update button	Tap to show the latest status again
④	Notice	Notify when there is yellow or red status

Details page : Functional overview



item	name	function
①	List button	Jumps to "Status of your Aquariums "page
②	Aquarium name	Indicates the aquarium name
③	management item	Management items and information
④	status	<ul style="list-style-type: none"> Displays the status and reference value for each management item Details are shown on the next page
⑤	mail button	Send the status of the displayed aquarium by text mail
⑥	Help button	<ul style="list-style-type: none"> Jump to help page You can jump to the "Settings page" from the help page
⑦	update date and time	Display update date and time

Details page : Explanation of each item



item	name	explanation
①	management item	Display the name and operation status in color <ul style="list-style-type: none"> • red : Heavy alarm (2nd threshold exceeded) • yellow : Light alarm (1st threshold exceeded : ※1) • gray : OK or Outside of alarm handling
②	Specific value	Show the management status concretely
	Done	The date and time when the maintenance or measurement was performed
	Elapsed	Number of days elapsed since the date and time when the maintenance or measurement was performed
	1st threshold	Number of days or measured value for light alarm
	2nd threshold	Number of days or measured value for heavy alarm
※1	☆pH(only)	Yellow display below the 1st threshold

Details page : Editing conditions

List

Mail

Help

Arowana

Thu, Apr 9, 10:53

⊙ HNO3

Measured

Apr 9, 2020 at 9:59 AM

Measured Value

0.0

1st threshold

20.0

2nd threshold

100.0

○ Launch Day

Launched

Apr 9, 2020 at 9:59 AM

Elapsed

0Day + 0Hour

Memo1

Max 20 characters

Memo2

Max 20 characters

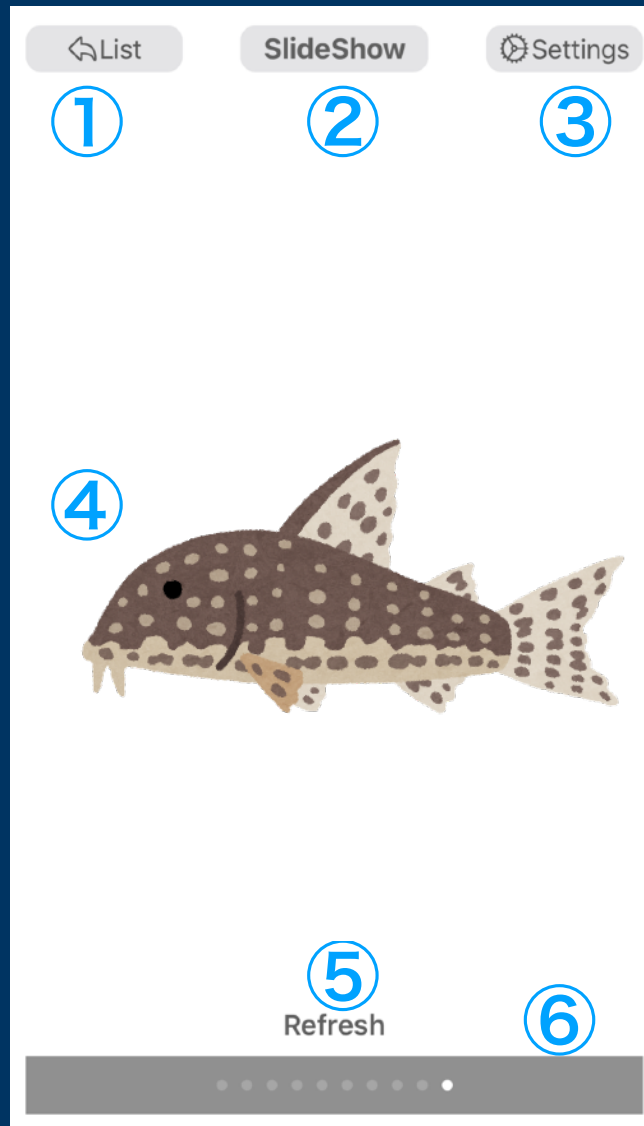
○ Breeding Period

Started

Apr 9, 2020 at 9:59 AM

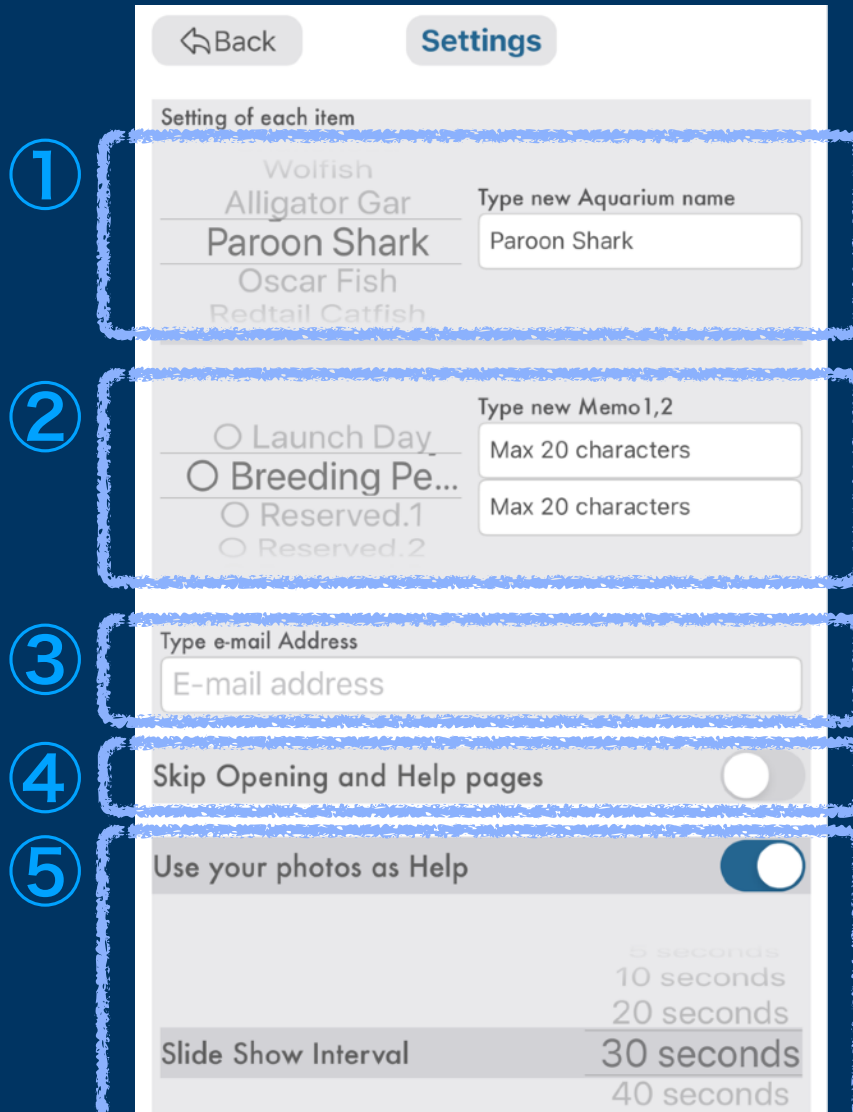
item	editable	editing conditions
Measured/ Launched/ Started	Yes	Future date and time cannot be specified
Measured value	Yes	<ul style="list-style-type: none"> • You can enter the measured value to the second decimal place • The entered date and time is automatically set as the measurement date and time
Elapsed	No	Calculated automatically based on execution / start / measurement date and time
1st threshold/ 2nd threshold	Yes	For days : Integer only
		For measured values : integer / decimal
Memo1/ Memo2	OK	<ul style="list-style-type: none"> • Up to 20 characters • Go to settings page and enter

Help page



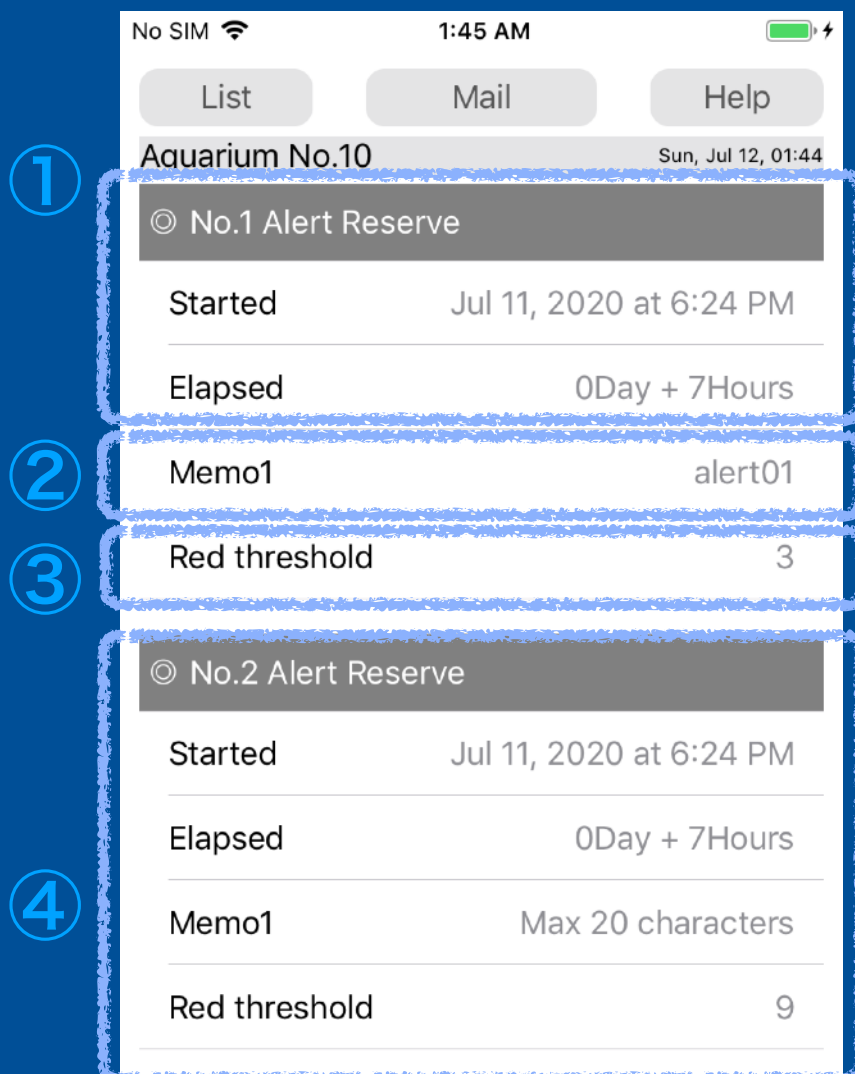
item	description	note
①	Jumps to “Status of your Aquariums” page	—
②	Start slideshow	This is displayed only when “Use your own photo” is set to “On” on settings pages.
③	Jumps to setting page	—
④	Displays a help description or your own photo	Please allow access to the Photos app
⑤	Update the display to the latest content	Valid when taking / deleting photos
⑥	Page scroll	Swipe operation is also available

Settings page



item	function	explanation
①	Aquarium name setting	<ol style="list-style-type: none"> 1. Select the aquarium on the left side 2. Type new name on the right side
②	Memo setting	<ol style="list-style-type: none"> 1. Select the aquarium same as ① 2. Select the memo item on the left side 3. Type memo1 on the right upper side 4. Type memo2 on the right lower side
③	Email destination settings	<ul style="list-style-type: none"> • You can set one destination to send mail frequently • No need to select a destination every time
④	Skip opening and Help pages	Quickly jumps to the “Status of your Aquariums” page when the application starts
⑤	Use your photos as Help	<ul style="list-style-type: none"> • Slideshow with photos and screen shots (latest 10 photos) instead of help explanation • Check to select slide show interval • Uncheck to get help as before

V103 Additional functions : Part 1



item	function	explanation
①	No.1 Alert Reserve	<ul style="list-style-type: none"> • Reserve No.1 with alert • You can manage the start date and time and the number of days elapsed. • There is only one type of alarm, Red threshold.
②	Memo1	<ul style="list-style-type: none"> • Please use it as a name for the spare. • Settings are made on the "Settings" page.
③	Red threshold	<ul style="list-style-type: none"> • It is a threshold for the number of days elapsed that a heavy alert is issued. • Please change the default value of 999 to an appropriate value when starting operation.
④	No.2 Alert Reserve	<ul style="list-style-type: none"> • Same as ①. • There is another No.3 Alert reserve. (3 in total)

V103 Additional functions : Part 2

No SIM 1:45 AM

List Mail Help

Aquarium No.10 Sun, Jul 12, 01:44

① ☐ Water Volume calculation

② Water Volume(L) 13.8

③ -Width(cm) 30.0

④ -Depth(cm) 20.0

⑤ -Height(cm) 23.0

☐ Salt bath calculation(approximation)

Input amount(g) 276.0

Water Volume(L) 13.8

-Salinity(%) 2.0

Blank

item	function	explanation
①	Water Volume Calculation	<ul style="list-style-type: none"> Enter the size of the aquarium in centimeters in the ③ width, ④ depth, and ⑤ height fields. The volume is displayed in liters in the water volume column of ②. While either of ②, ③ and ④ is zero, the water volume is also displayed as zero.
②	Water Volume	<ul style="list-style-type: none"> The volume of the aquarium is displayed in liters.
③	width	<ul style="list-style-type: none"> Enter the width size of the aquarium in centimeters.
④	depth	<ul style="list-style-type: none"> Enter the depth size of the aquarium in centimeters.
⑤	height	<ul style="list-style-type: none"> Enter the height size of the aquarium in centimeters.

V103 Additional functions : Part 3

No SIM 1:45 AM

List Mail Help

Aquarium No.10 Sun, Jul 12, 01:44

○ Water Volume calculation

Water Volume(L) 13.8

-Width(cm) 30.0

-Depth(cm) 20.0

-Height(cm) 23.0

① ○ Salt bath calculation(approximation)

② Input amount(g) 276.0

③ Water Volume(L) 13.8

④ -Salinity(%) 2.0

⑤ Blank

item	function	explanation
①	Salt bath calculation	<ul style="list-style-type: none"> The amount of salt input ② for salt bathing is calculated based on the water volume ③ and salt concentration ④ and shown in grams. The approximate formula is $② = ③ \times 1000 \times ④ \div 100$
②	Input amount	The amount of salt to be added is displayed in grams.
③	Water Volume	The volume of the water obtained in the previous step is displayed in liters.
④	Salinity	Enter the desired salinity in percent.
⑤	Blank	No input required.

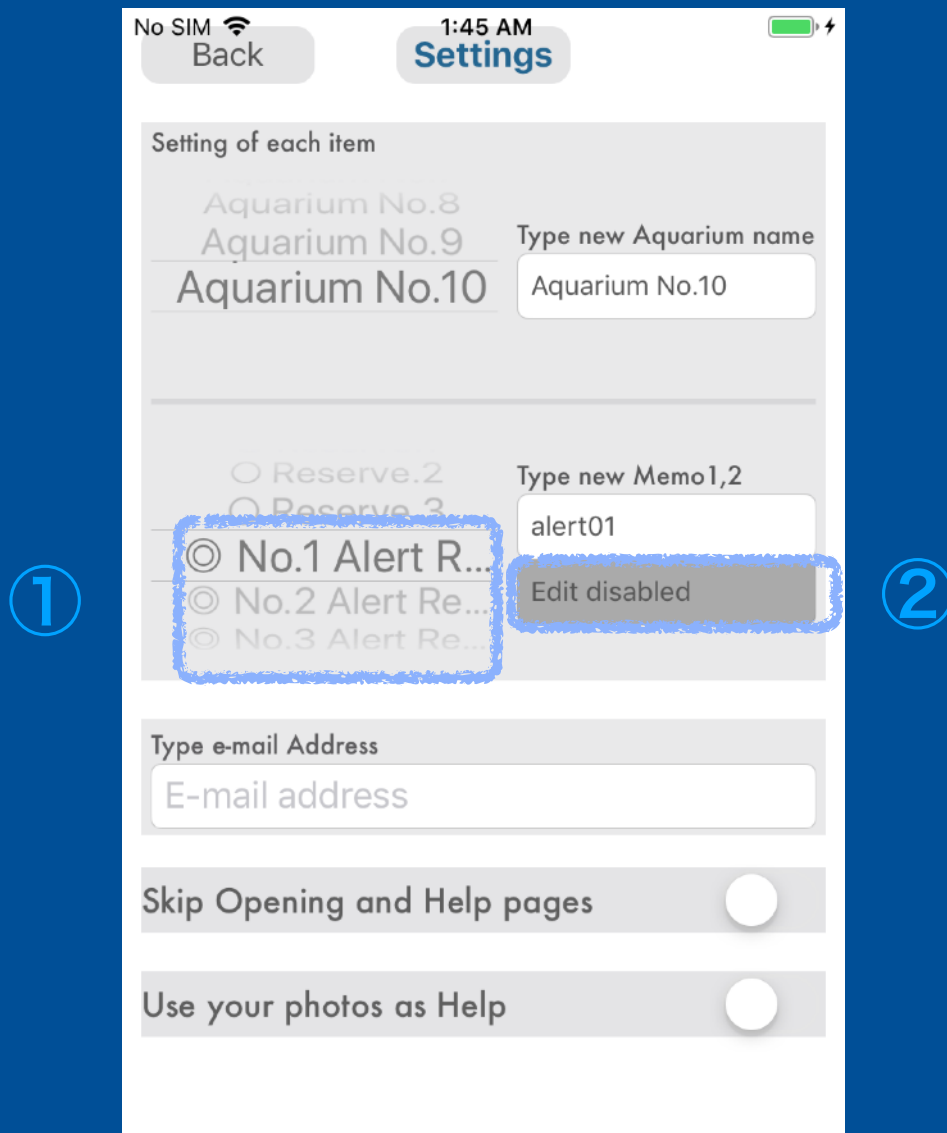
V103 Additional functions : Part 4

○ Salt bath calculation(approximation)	
Input amount(g)	276.0
Water Volume(L)	13.8
-Salinity(%)	2.0
Blank	

①	○ Medicine bath calculation(approximation)
②	Input amount(g/ml/cc) 69.0
③	Water Volume(L) 13.8
④	-for xx(L) of water 1.0
⑤	-medication yy(g/ml/cc) 5.0

item	function	explanation
①	Medicine bath calculation	<ul style="list-style-type: none"> The amount ② of the medicine to be added when taking the medicine bath is referred to as the volume of the water ③ and "to xx liters of water" ④ described in the instruction manual for the medicine, and "to add yy grams or yy milliliters or yy cc of medicine" to the medication ⑤ Calculate based on instructions. Approximate formula is $②=③÷④×⑤$
②	Input amount	The amount of medicine to be added is displayed.
③	Water Volume	The volume of the water obtained in the previous step is displayed in liters.
④	Water content	Enter the value of xx in "To xx liters of water" in the instruction manual for the medicine.
⑤	dosage	Enter the yy value of "Add yy grams of medicine, yy milliliters or yy cc," in the instruction manual for the medicine.

V103 Additional functions : Part 5



item	function	explanation
①	Memo setting target	“Alert reserve 1 to 3” has been added to the items for which memos can be set.
②	Memo content	<ul style="list-style-type: none"> For Alert reserves 1 to 3, it indicates that editing for memo 2 is invalid. Only memo 1 can be edited for Alert Reserve 1 to 3. Instead of Memo 2, you can set the number of days for which a heavy alert will be issued for Alert reserves 1 to 3. The settings are made on the details page.